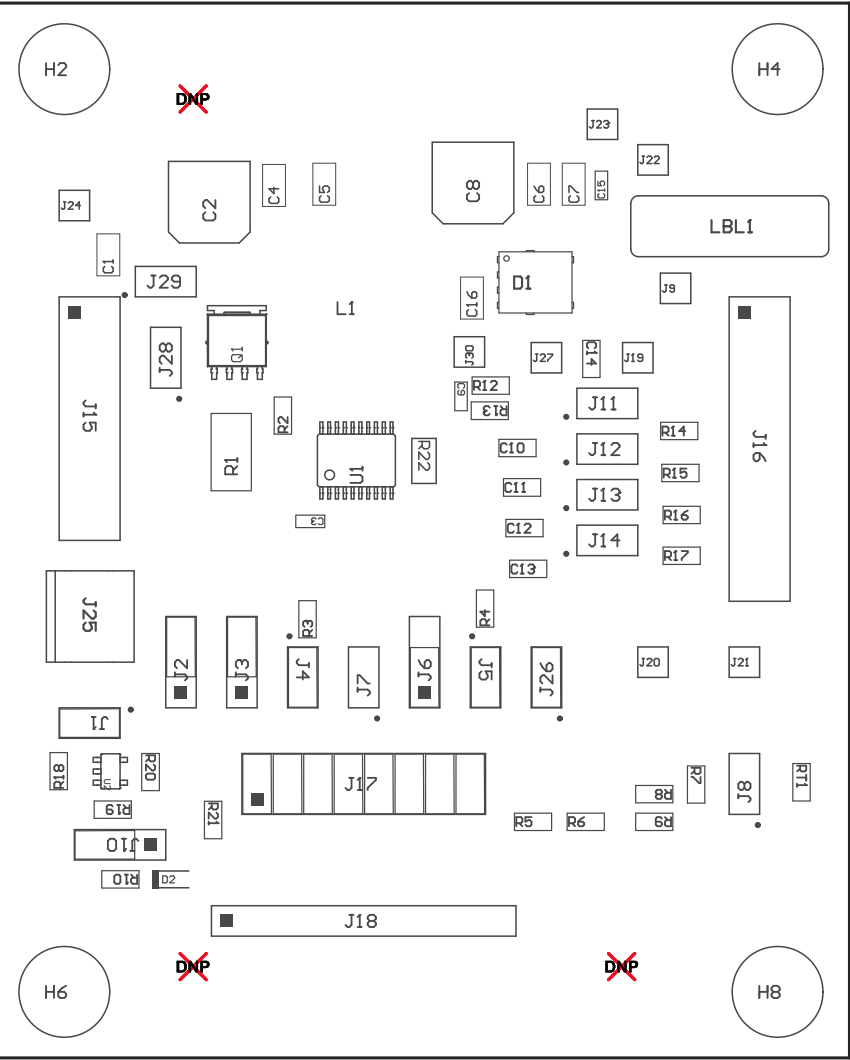
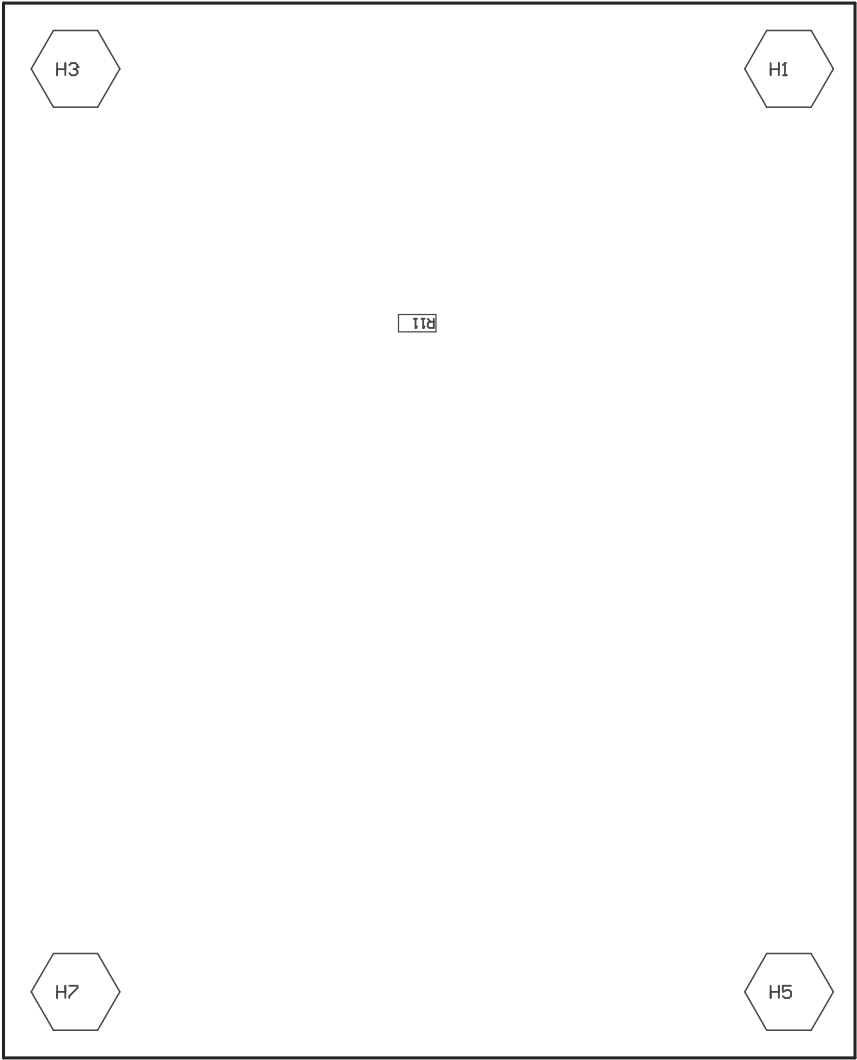


- Z21 ■Install label in silkscreened box after final wash. Text shall be 8 pt font. Text shall be per the Label Table in the PDF schematic.
- Z22 ■These assemblies are ESD sensitive, ESD precautions shall be observed.
- Z23 ■These assemblies must be clean and free from flux and all contaminants. Use of no clean flux is not acceptable.
- Z24 ■These assemblies must comply with workmanship standards IPC-A-610 Class 2, unless otherwise specified.



COMPONENTS MARKED 'DNP' SHOULD NOT BE POPULATED.
ASSEMBLY VARIANT: 001

| | | | |
|----------------------------------|-------------------------------|-------------------|--------------------------------|
| PCB VIEWED FROM TOP SIDE | BOARD #: TIDA-00503 | REV: SEPIC | SUN REV: Not In VersionControl |
| IGNORE -> | | | |
| PLOT NAME = Top Assembly Drawing | GENERATED : 2.10.2015 9:43:13 | TEXAS INSTRUMENTS | |



COMPONENTS MARKED 'DNP' SHOULD NOT BE POPULATED.
ASSEMBLY VARIANT: 001

| | | | |
|-------------------------------------|-------------------------------|------------|--------------------------------|
| PCB VIEWED FROM BOTTOM SIDE | BOARD #: TIDA-00503 | REV: SEPIC | SUN REV: Not In VersionControl |
| | IGNORE -> | | |
| PLOT NAME = Bottom Assembly Drawing | GENERATED : 2.10.2015 9:43:14 | | TEXAS INSTRUMENTS |